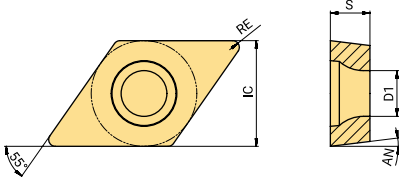



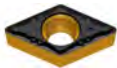
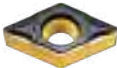

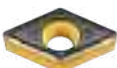

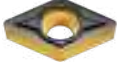
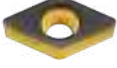

Turning Inserts Positive 55° (D)

(mm)



Product code	IC	S	D1	AN
DC_0702_	6.35	2.38	2.80	7°
DC_11T3_	9.525	3.97	4.40	7°

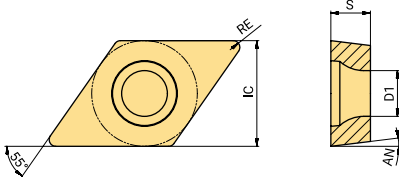
ISO Turning Inserts

Inserts	Product code	RE (mm)	Recommended parameters		Machining conditions															
					● Good Conditions ● General Conditions ✖ Bad Conditions															
					P						M				K			N		S
		f (mm/rev)	ap (mm)	AT202	AT210A	AC052P	AC152P	AC252P	AC350P	AC100M	AC200M	AP200U	AP301M	AC100K	AC102K	AC202K	AW100K	AP100S		
Finishing		DCMT 11T304-F1Y	0.40	0.08-0.25	0.50-2.00	●	●													
		DCMT 11T302E-PA1	0.20	0.04-0.25	0.10-1.00	●	●	●	○											
		11T304E-PA1	0.40	0.04-0.25	0.10-1.00	●	●	●	●											
		11T308E-PA1	0.80	0.05-0.30	0.10-1.00	●	●	●	●											
		DCMT 070202E-PB1	0.20	0.02-0.07	0.15-1.50	●	●		○	●		●	●	●						
		070204E-PB1	0.40	0.04-0.14	0.30-1.50	●	●		●	●		●	●	●						
		11T302E-PB1	0.20	0.02-0.07	0.15-2.30	●	●		○	○		●	●	●						
		11T304E-PB1	0.40	0.04-0.14	0.30-2.30	●	●	●	●	●		●	●	●						
		11T308E-PB1	0.80	0.09-0.28	0.60-2.30	●	●	●	○	●		●	●	●						
		DCMT 070202-F2K	0.20	0.06-0.15	0.50-2.00	●	●													
070204-F2K		0.40	0.08-0.20	0.50-2.00	●	●														
11T302-F2K		0.20	0.06-0.15	0.50-2.00	●	●														
11T304-F2K		0.40	0.08-0.20	0.50-2.00	●	●														
11T308-F2K		0.80	0.10-0.25	0.50-2.00	●	●														
Semi-finishing		DCMT 070204E-PC2	0.40	0.05-0.16	0.35-2.10	●	●		●	○		●	●	●				●		
		070208E-PC2	0.80	0.10-0.32	0.70-2.10	●	●		●	●		●	●	●				●		
		11T304E-PC2	0.40	0.05-0.16	0.35-3.10	●	●	●	●	●		●	●	●				●		
		11T308E-PC2	0.80	0.10-0.32	0.70-3.10	●	●	○	●	●		●	●	●				●		
	11T312E-PC2	1.20	0.16-0.48	1.05-3.10	●	●		●	○		●	●	●				●			
	DCMT 11T304-M2T	0.40	0.10-0.25	0.50-3.00	●	●														
	11T308-M2T	0.80	0.10-0.25	0.50-3.00	●	●														
Medium		DCMT 070204E-KC2	0.40	0.06-0.18	0.40-2.30	●	●		●	○					●	●				
		070208E-KC2	0.80	0.12-0.36	0.80-2.30	●	●		○	○					●	●				
		11T304E-KC2	0.40	0.06-0.18	0.40-3.50	●	●		●	●					●	●				
		11T308E-KC2	0.80	0.12-0.36	0.80-3.50	●	●	○	●	●					●	●				
Roughing		DCMW 070204E-KD5	0.40	0.06-0.18	0.40-3.90										●	●				
		070208E-KD5	0.80	0.12-0.36	0.80-3.90										●	●				
		11T304E-KD5	0.40	0.06-0.18	0.40-5.80										●	●				
		11T308E-KD5	0.80	0.12-0.36	0.80-5.80										●	●				
Finishing		DCET 0702003FR-F	<0.03	0.02-0.18	0.10-0.40							○	●							
		0702003FL-F	<0.03	0.02-0.18	0.10-0.40							○	●							
		0702005FR-F	<0.05	0.02-0.18	0.10-0.40							○	●							
		0702005FL-F	<0.05	0.02-0.18	0.10-0.40							○	●							
		070201FR-F	<0.10	0.02-0.18	0.10-0.40	●							○	●						

● : Standard stock ○ : Made-to-Order

Turning Inserts Positive 55° (D)

(mm)

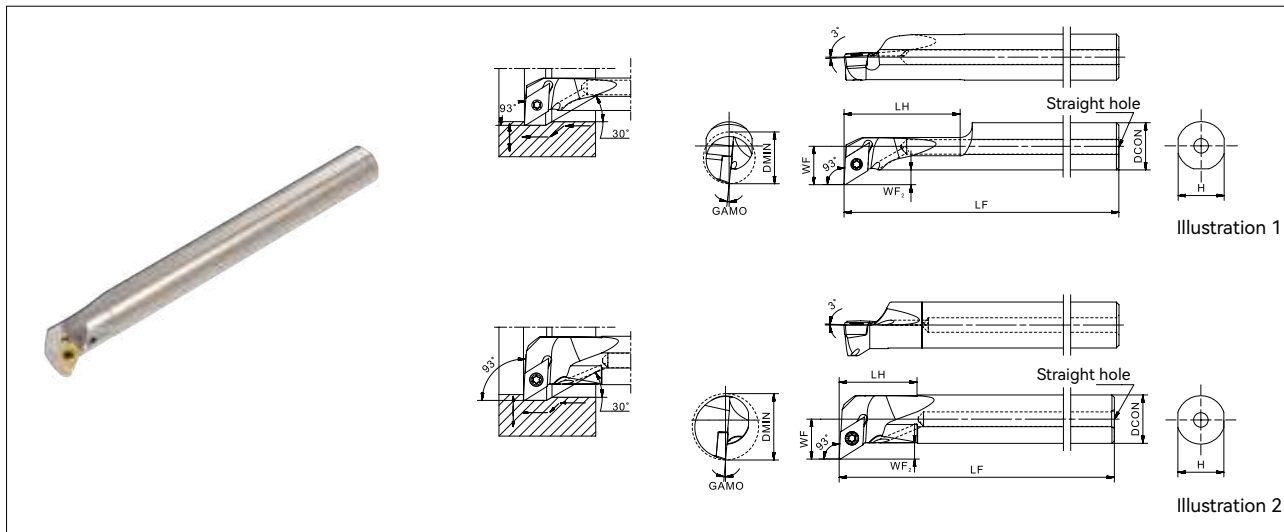


Product code	IC	S	D1	AN
DC_0702_	6.35	2.38	2.80	7°
DC_11T3_	9.525	3.97	4.40	7°

Inserts	Product code	RE (mm)	Recommended parameters f (mm/rev) ap (mm)		Machining conditions														
					● Good Conditions ● General Conditions ✖ Bad Conditions														
					P				M				K				N		S
					AT202	AT210A	AC052P	AC152P	AC252P	AC350P	AC100M	AC200M	AP200U	AP301M	AC100K	AC102K	AC202K	AW100K	AP100S
Finishing	DCET 070201FL-F	<0.10	0.02-0.18	0.10-0.40	○	○							○	●					
	070202FR-F	<0.20	0.02-0.18	0.10-0.40	○								○	●					
	070202FL-F	<0.20	0.02-0.18	0.10-0.40	○								○	●					
	070204FR-F	<0.40	0.02-0.18	0.10-0.40	○								○	●					
	070204FL-F	<0.40	0.02-0.18	0.10-0.40	○								○	●					
	DCET 11T3003FR-F	<0.03	0.02-0.20	0.10-0.40									○	●					
	11T3003FL-F	<0.03	0.02-0.20	0.10-0.40									○	●					
	11T3005FR-F	<0.05	0.02-0.20	0.10-0.40									○	●					
	11T3005FL-F	<0.05	0.02-0.20	0.10-0.40									○	●					
	11T301FR-F	<0.10	0.02-0.20	0.10-0.40	○								○	●					
	11T301FL-F	<0.10	0.02-0.20	0.10-0.40	○								○	●					
	11T302FR-F	<0.20	0.02-0.20	0.10-0.40	●								○	●					
	11T302FL-F	<0.20	0.02-0.20	0.10-0.40	○								○	●					
	11T304FR-F	<0.40	0.02-0.20	0.10-0.40	●								○	●					
	11T304FL-F	<0.40	0.02-0.20	0.10-0.40	○								○	●					
	Low feed	DCET 0702003FR-M	<0.03	0.01-0.08	0.50-2.80								○	●					
0702003FL-M		<0.03	0.01-0.08	0.50-2.80								○	●						
0702005FR-M		<0.05	0.01-0.08	0.50-2.80								○	●						
0702005FL-M		<0.05	0.01-0.08	0.50-2.80								○	●						
070201FR-M		<0.10	0.01-0.08	0.50-2.80	○							○	●						
070201FL-M		<0.10	0.01-0.08	0.50-2.80	○							○	●						
070202FR-M		<0.20	0.01-0.08	0.50-2.80	●							○	●						
070202FL-M		<0.20	0.01-0.08	0.50-2.80	○							○	●						
070204FR-M		<0.40	0.01-0.08	0.50-2.80	○							○	●						
070204FL-M		<0.40	0.01-0.08	0.50-2.80	○							○	●						
DCET 11T3003FR-M		<0.03	0.01-0.10	0.50-4.00								○	●						
11T3003FL-M		<0.03	0.01-0.10	0.50-4.00								○	●						
11T3005FR-M		<0.05	0.01-0.10	0.50-4.00								○	●						
11T3005FL-M		<0.05	0.01-0.10	0.50-4.00								○	●						
11T301FR-M		<0.10	0.01-0.10	0.50-4.00	○							○	●						
11T301FL-M		<0.10	0.01-0.10	0.50-4.00	○							○	●						
11T302FR-M		<0.20	0.01-0.10	0.50-4.00	●							○	●						
11T302FL-M		<0.20	0.01-0.10	0.50-4.00	○							○	●						
11T304FR-M		<0.40	0.01-0.10	0.50-4.00	●							○	●						
11T304FL-M		<0.40	0.01-0.10	0.50-4.00	○							○	●						

● : Standard stock ○ : Made-to-Order

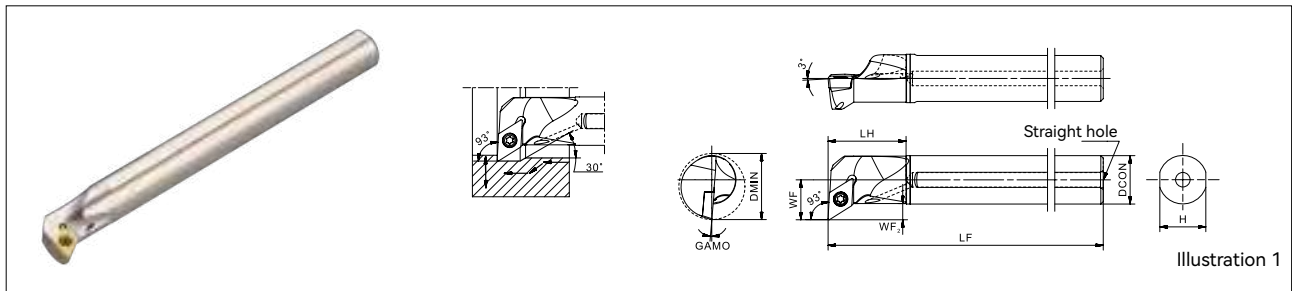
A-SDUC Steel Boring Bar (Internal/Internal Profile Boring)



Product code	Stock		Minimum boring hole diameter (mm)	Dimension							Insert corner radius (RE)	Internal coolant	Illustration	Spare parts		Insert
	R	L		DCON	H	LF	LH	WF	WF2	GAMO				Screw	Wrench	
A10K-SDUCR/L07-14	○	○	14	10	9	125	19	8.7	3.3	5°	0.4	With	2	SP025064	FT-TP08	DC*T 0702... DC*W 0702...
A16Q-SDUCR/L07-14	○	○		16	15	180	28	10.8	4.4							
A12M-SDUCR/L07-16	○	○	16	12	11	150	21	9.7	3.3				1			
A16Q-SDUCR/L07-20	●	●	20	16	15	180	27	11.3	3.5					2		
A20R-SDUCR/L11-20	●	●		20	19	200	53	15.6	6.1				1			
A16Q-SDUCR/L11-23	●	●	23	16	15	180	25.8	14.5	6.5					2		
A20R-SDUCR/L11-27	●	●	27	20	19	200	32.2	16.5					SP040065		FT-TP15	DC*T 11T3... DC*W11T3...
A25S-SDUCR/L11-32	●	●	32	25	24	250	36.9	19	SP040093X							

● : Standard stock ○ : Made-to-Order

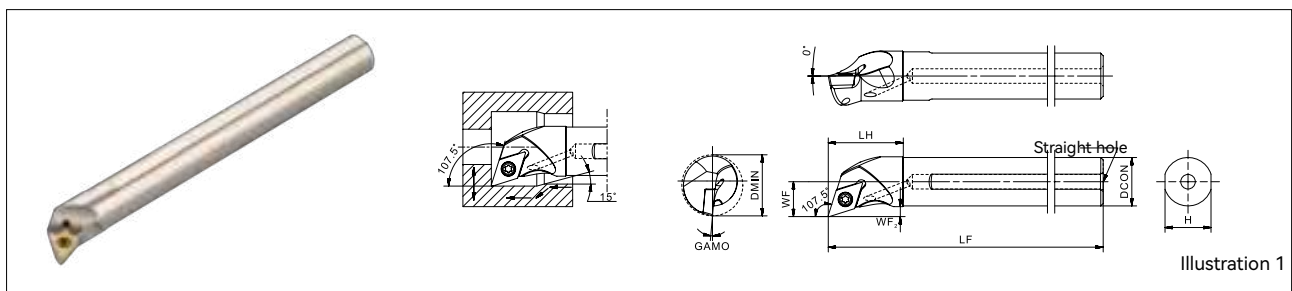
E-SDUC Carbide Boring Bar (Internal/Internal Profile Boring)



Product code	Stock		Minimum boring hole diameter (mm)	Dimension							Insert corner radius (RE)	Internal coolant	Illustration	Spare parts		Insert
	R	L		DCON	H	LF	LH	WF	WF2	GAMO				Screw	Wrench	
E10M-SDUCR/L07-14	○	○	14	10	9	150	20	8.7	3.3	5°	0.4	With	1	SP025064	FT-TP08	DC*T 0702... DC*W 0702...
E12M-SDUCR/L07-16	○	○	16	12	11	150	23	9.7								
E16Q-SDUCR/L07-20	○	○	20	16	15	180	28	11.7								
E16Q-SDUCR/L11-23	●	●	23	16	15	180	25.8	14.5	6.5					SP040065	FT-TP15	DC*T 11T3... DC*W11T3...
E20R-SDUCR/L11-27	●	●	27	20	19	200	32	16.5								
E25S-SDUCR/L11-32	○	○	32	25	24	250	38	19								

● : Standard stock ○ : Made-to-Order

A-SDQC Steel Boring Bar (Internal/Internal Profile Boring)



Product code	Stock		Minimum boring hole diameter (mm)	Dimension							Insert corner radius (RE)	Internal coolant	Illustration	Spare parts		Insert
	R	L		DCON	H	LF	LH	WF	WF2	GAMO				Screw	Wrench	
A10K-SDQCR/L07-13	○	○	13	10	9	125	19	7.5	2.1	10°	0.4	With	1	SP025064	FT-TP08	DC*T 0702... DC*W 0702...
A12M-SDQCR/L07-16	○	○	16	12	11	150	22	9.25	2.6	8°						
A16Q-SDQCR/L07-20	○	○	20	16	15	180	25	11.3	2.6	6°						
A20R-SDQCR/L11-25	●	●	25	20	19	200	31	14.4	3.7	5°				SP040065	FT-TP15	DC*T 11T3... DC*W11T3...
A25S-SDQCR/L11-30	○	○	30	25	24	250	38	16.9	3.7	4°						

● : Standard stock ○ : Made-to-Order

E-SDQC Carbide Boring Bar (Internal/Internal Profile Boring)

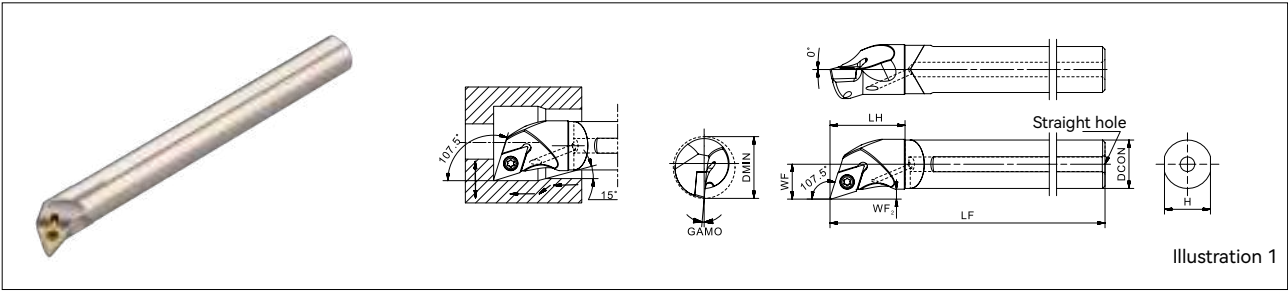


Illustration 1

Product code	Stock		Minimum boring hole diameter (mm)	Dimension							Insert corner radius (RE)	Internal coolant	Illustration	Spare parts		Insert
	R	L		DCON	H	LF	LH	WF	WF2	GAMO				Screw	Wrench	
			DMIN													
E10M-SDQCR/L07-13	○	○	13	10	9	150	20	7.5	2.1	10°	0.4	With	1	SP025064	FT-TP08	DC*T 0702... DC*W 0702...
E12M-SDQCR/L07-16	○	○	16	12	11	150	23	9.25	2.6	8°						
E16Q-SDQCR/L07-20	○	○	20	16	15	180	28	11.3		6°						
E20R-SDQCR/L11-25	●	●	25	20	19	200	31	14.4	3.7	5°						
E25S-SDQCR/L11-30	○	○	30	25	24	250	38	16.9		4°						

● : Standard stock ○ : Made-to-Order